



How-to print Color-Logic special effects with white toner

Fiery IC-323 and IC-322 driving
Konica Minolta AccurioPress
C14010S/C12010S





Create stunning white toner effects with Fiery, Konica Minolta, and Color-Logic

Enhance your print capabilities with vibrant white toner on black, dark, and metallic media, powered by Fiery® IC-323/IC-322 for the Konica Minolta AccurioPress C14010S/C12010S. Ideal for specialty jobs that demand high-impact, standout quality.

Objectives

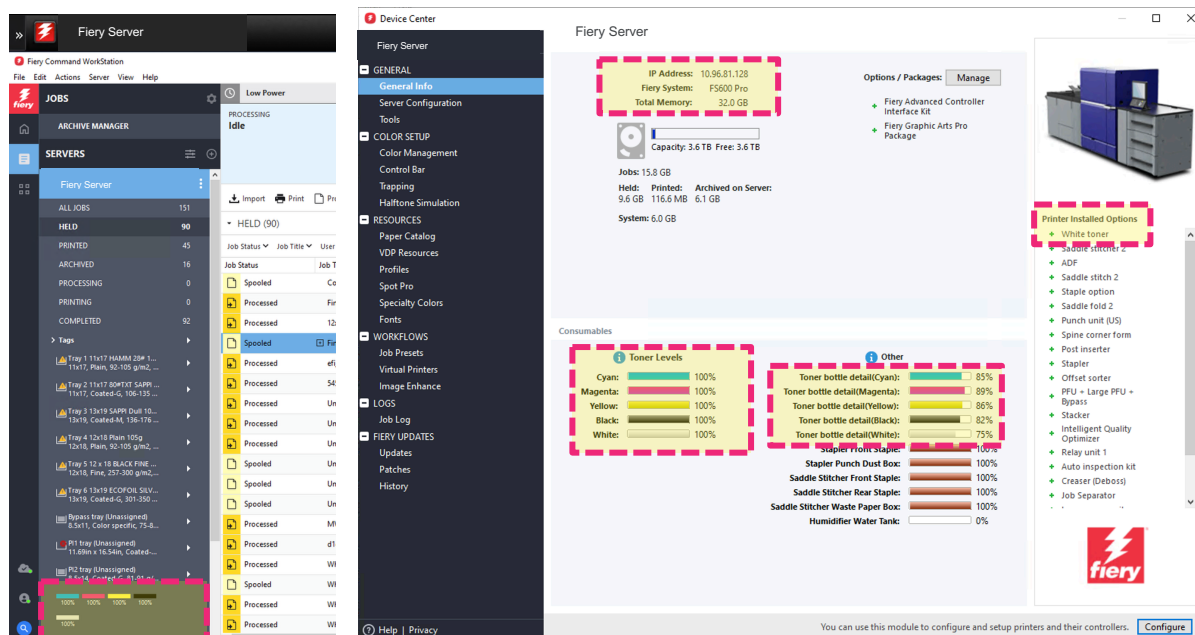
- Enable and optimize white toner workflows, including preparation of Color-Logic files
- Configure your Paper Catalog
- Preview results using ImageViewer

Requirements to support this functionality:

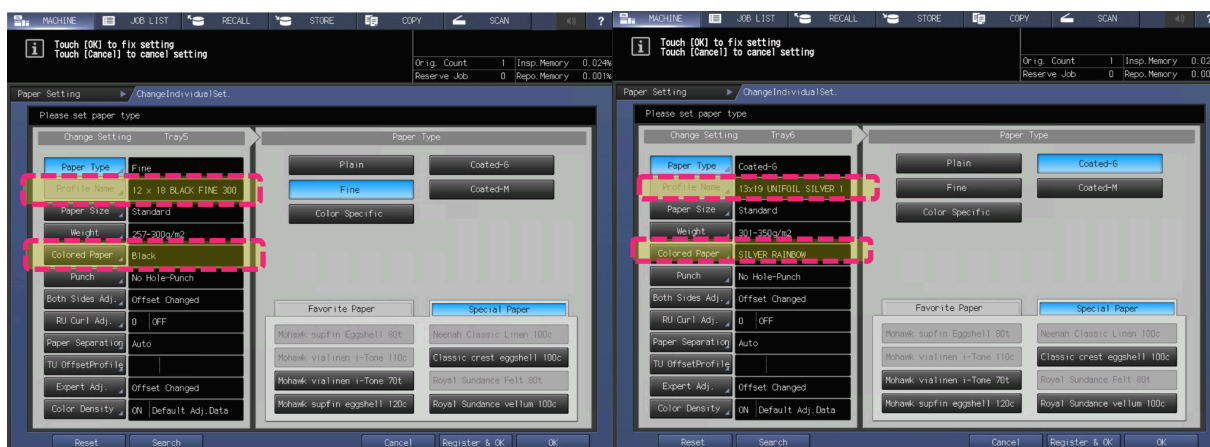
- Fiery IC-323/IC-322 connected to a Konica Minolta AccurioPress C14010S/C12010S
 - Properly configured to support CMYK+ White toners
- Color or Silver paper must be loaded in a printer tray and defined in the Paper Catalog as colored media (e.g., black or silver – use the 'Other' media type)
 - As of July 2025, calibration is not supported for clear media
- A file that is properly designed with White spot colors
- **Applications:**
 - [Fiery Command WorkStation v7.1](#) (or above) and [Fiery Spot-On](#) for advanced color controls to produce Color-Logic specialty colors (ex. CL 4713 SILVER)
 - *Fiery Command WorkStation and a [supported spectrophotometer](#) is used to calibrate White and CMYK toners to optimize and maintain color repeatability*
 - If you want to create custom ICC media profiles using the IQ-601 you will need [Fiery Color Profiler Suite v5.9](#) (or above) which is included on IC-323 and optional for IC-322
 - *Fiery Color Profiler Suite is not required to support white printing*
 - If you want to preview how white is used in a job before printing, you will need the [Fiery Graphic Arts Pro Package](#) (5-years included on IC-323, optional for IC-322) to use the [ImageViewer](#) functionality
 - *Fiery Graphic Arts Pro Package is not required to support white printing, it provides visual confirmation and editing tools*

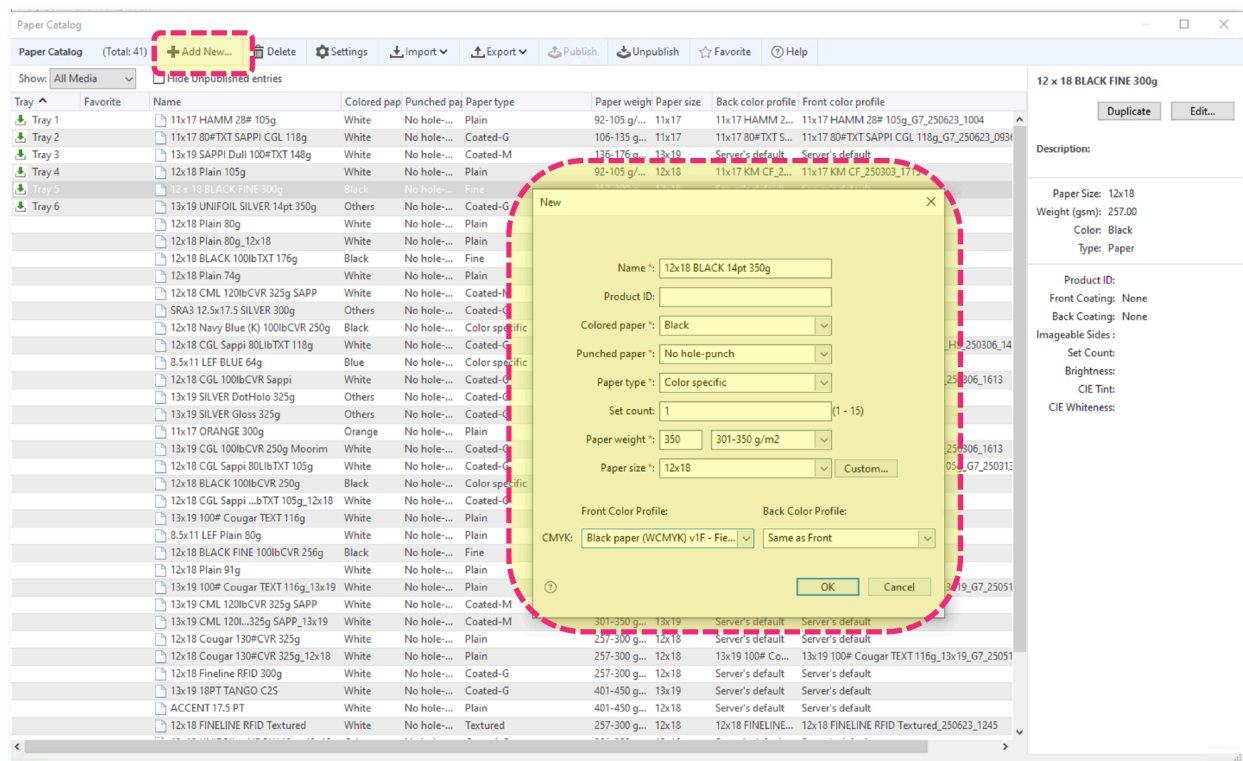
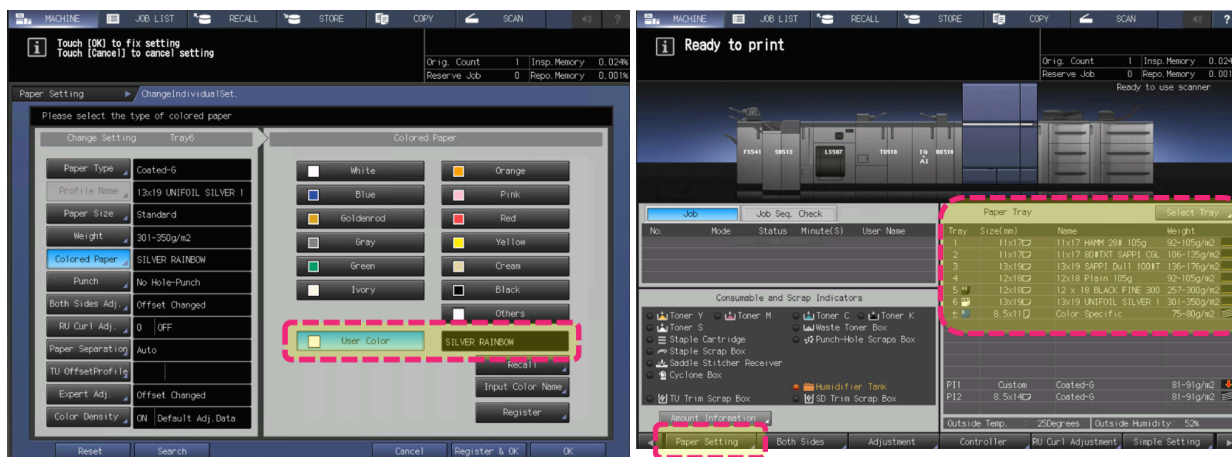
Paper Catalog configuration

To ensure that your printing system is configured correctly, use Fiery Command WorkStation to review the '**Device Center**' Settings of your printing system.



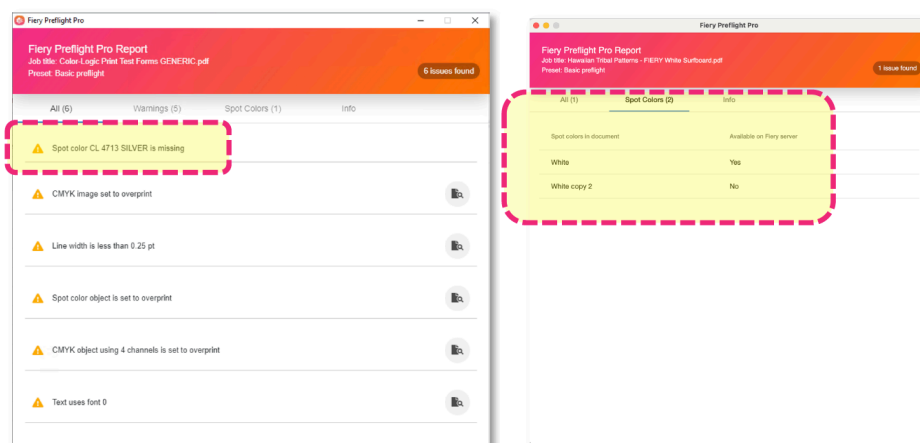
Next, ensure you have **Paper Catalog** entries properly configured to be used for White toner. When working with the Konica Minolta AccurioPress and the IC-323/IC-322, Paper Catalog entries can be created in the <**Printer** -> **Paper Setting**> or in the <**Fiery** -> **Paper Catalog**>.





Preflight to check for spot colors

Both the IC-323 and IC-322 include a **'Preflight'** or **'Preflight Pro'** feature. You can perform a basic preflight of your file to ensure it includes Spot White Colors if that is how the file was setup to use White. Color-Logic files use **'CL 4713 Silver'** spot color for White on Silver media.

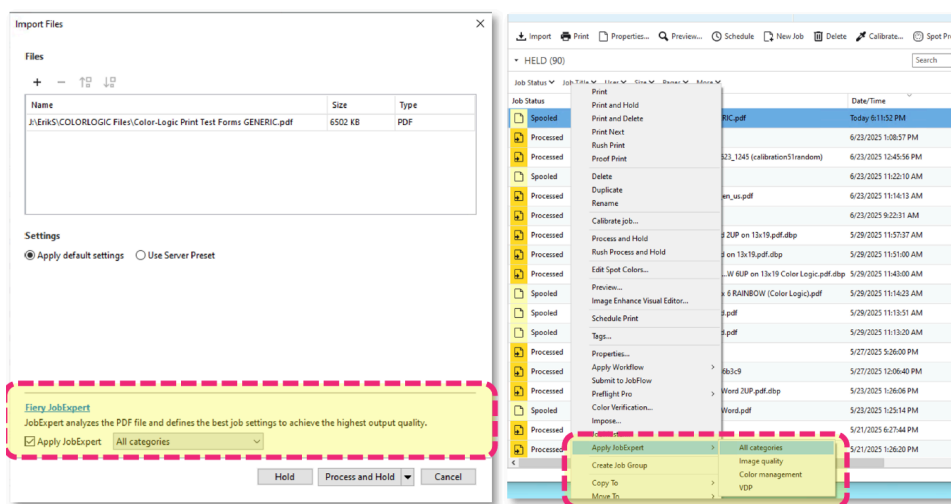


Note: Currently the 'Spot Colors' check only applies to Spot Colors, not Specialty Colors. But the existence of All Named colors will be included.

We have now confirmed that your system supports white, that you have your media properly configured to leverage White toner (typically defined as Colored Media), and that your file includes White defined Spot Colors.

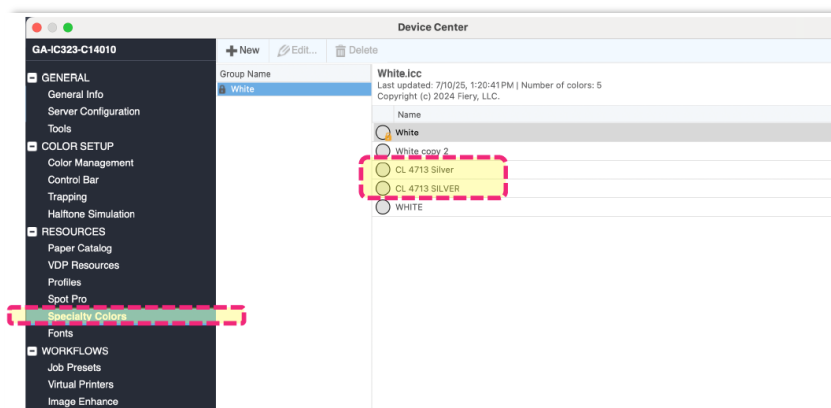
Importing a job

When importing print jobs into a Fiery server using Fiery Command WorkStation or Hot Folders we recommend using [Fiery JobExpert](#) to automatically configure correct print settings or manually configure PDF jobs to process using the Adobe PDF Print Engine and to enable 'Composite Overprint' and 'Spot Color Matching'. JobExpert is available in the 'Import File' window or as a <Right-click pop-up menu option'.

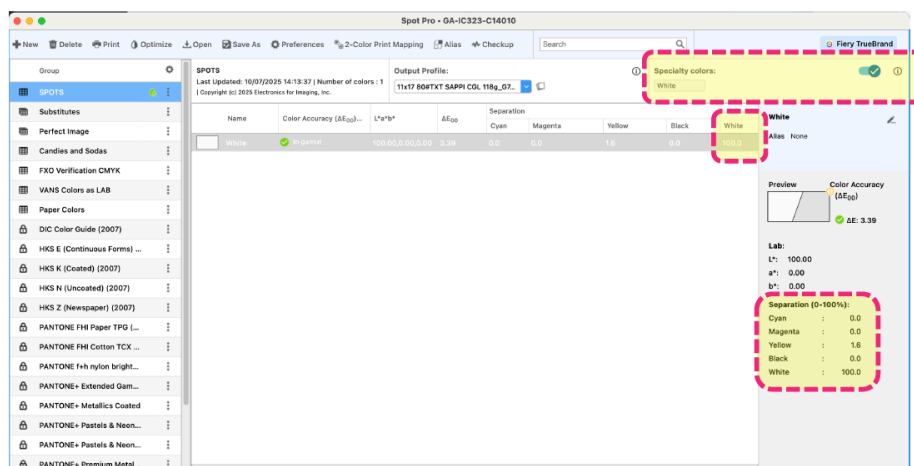


Add specialty colors to Device Center

In the previous step we used <**Command WorkStation** -> **Preflight**> to identify which color names in your file might be used to utilize the White toner. Now we need to add those Specialty Colors so that the Fiery server knows to use White toner when it finds elements that use those colors. Use <**Command WorkStation** -> **Device Center** -> **Specialty Colors**> to define custom spot colors for White toner. Enter color names exactly as defined in the file (case and space sensitive) to ensure proper recognition.



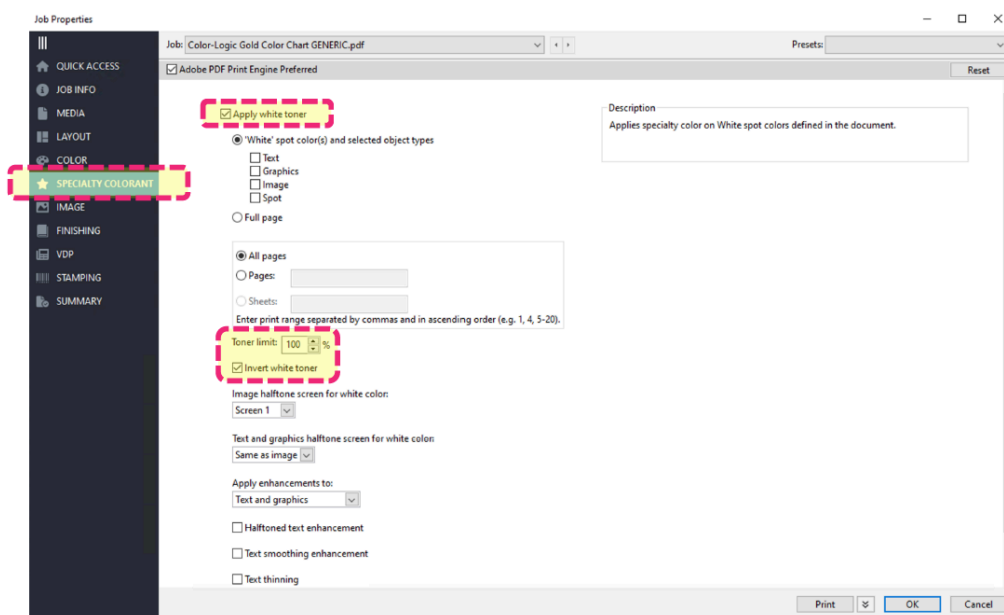
If you want to control the utilization of White toner for Spot Colors, you can also do that via Fiery Spot-On or Spot Pro within Fiery Command WorkStation. This is NOT necessary for Color-Logic files.



Import the job and apply job properties

Import the Color-Logic job(s) you want to print into Command WorkStation. Open the Job Properties window and click on **<SPECIALTY COLORANT>** in the left-hand panel. This provides controls for how to apply White toner (to specific/all elements; for all pages or a page range).

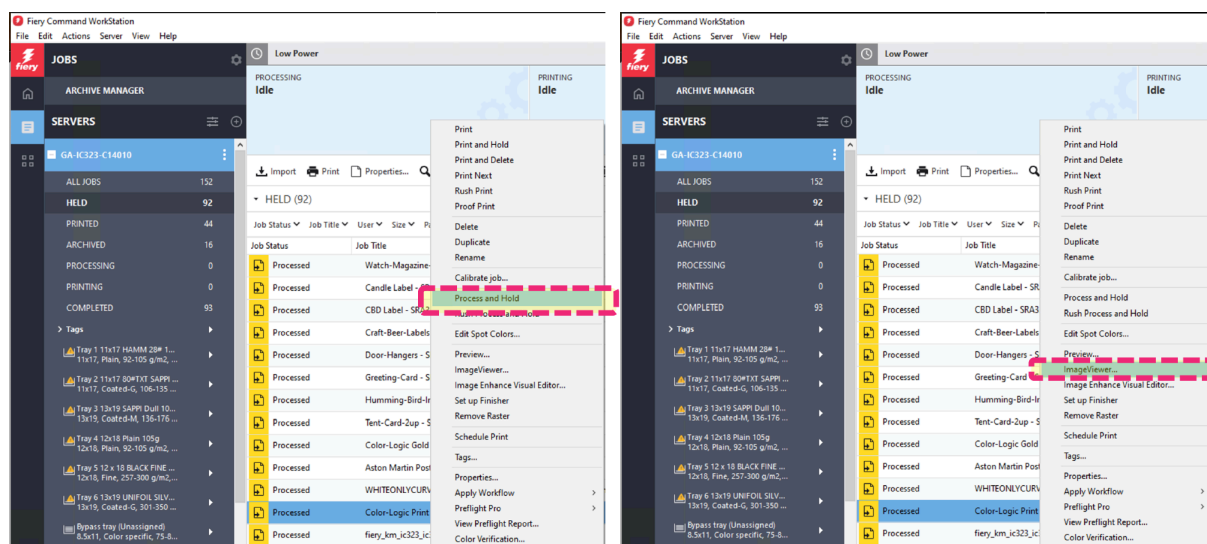
Select 'Apply white toner' and 'Invert white toner'. Select any other relevant job properties (such as Media, Layout and Finishing) then click **<OK>**.



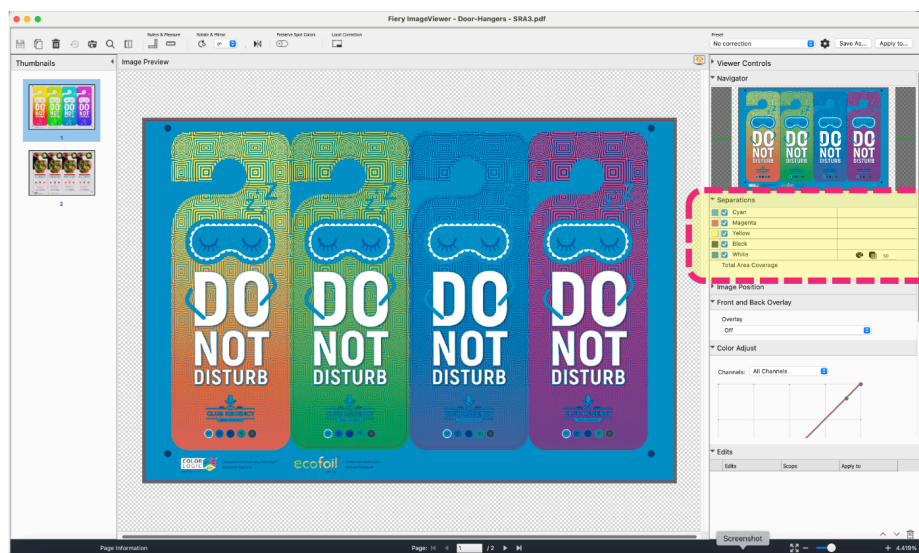
Confirm the job is using White

Finally, if you would like to validate that your job is utilizing White correctly, the Fiery IC-323 includes a Fiery option called [Fiery Graphic Arts Pro Package](#) which enables a feature called 'ImageViewer'. Graphic Arts Pro Package can be added to the IC-322 and is highly recommended to preview and correct color issues.

A file must be '**Processed and Held**' to open the file in ImageViewer. Right-click on a job in Command WorkStation and select **<Process and Hold>**. Once the file is processed, right-click on the job again and choose '**ImageViewer**'.

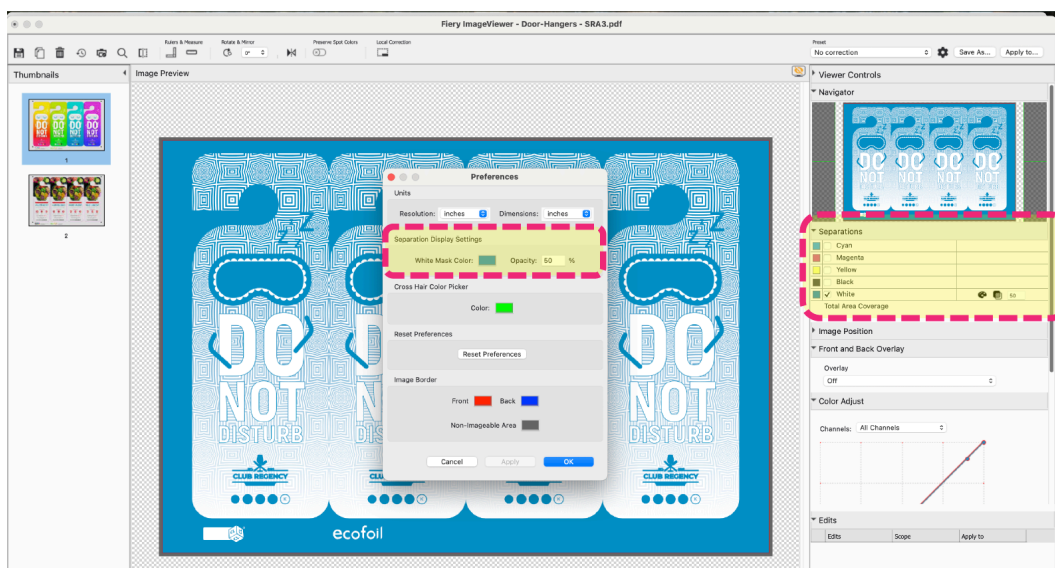


The processed file will open in full-color mode in ImageViewer.



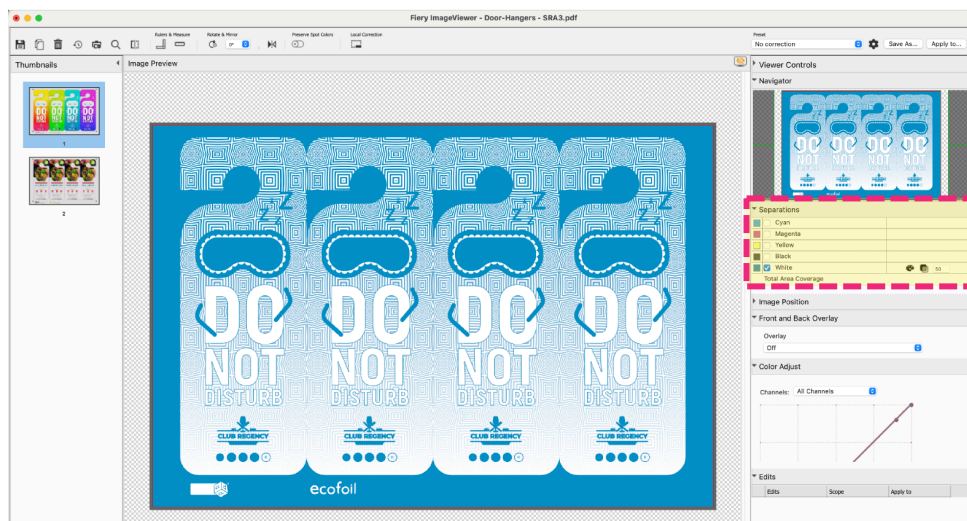
Expand the '**Separations**' panel in the Viewer Controls window at the right. Disable the Cyan, Magenta, Yellow, and Black channels to isolate the White toner channel only.

You can also use the <**ImageViewer -> Edit -> Preferences**> to assign a unique color value for the 'White Mask Color' which will change the color used to display the White areas.



The window below shows the impact of how White toner will be used to print your file.

White toner is printed first, as it is the first imaging station in the printer. If you close ImageViewer in this state it will ask if you want to Save your changes. This will save the setting to only print the White Channel. **Be careful** to either enable the other Color Separations or to Close the file without saving changes, unless you want to print only White.



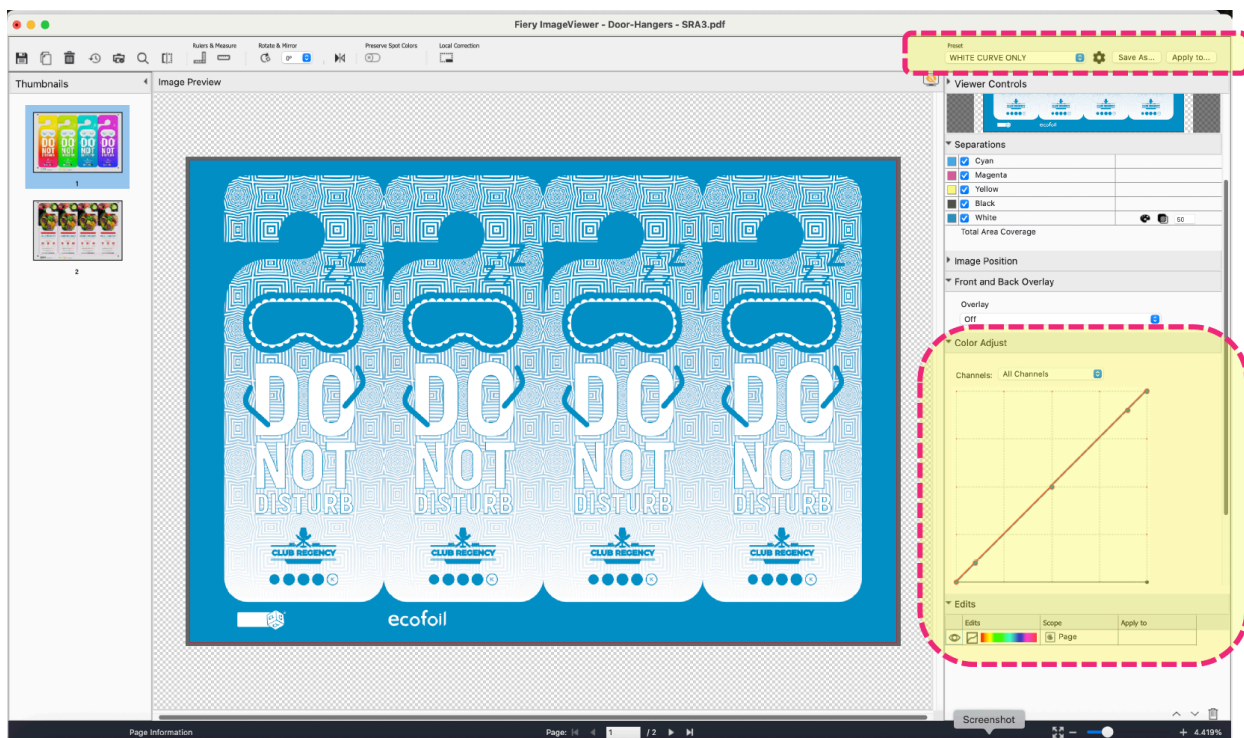
Dual Pass White:

Additionally, some darker medias and design files may benefit from doing a Dual Pass White print. Evaluate this feature on a job-by-job basis, as small white fonts or tight traps (white underlay) may cause misregistration in multi-pass printing. Use discretion when attempting the following.

Using ImageViewer, you can create a White-only Curve preset to only print White for a dual pass, or manually manipulate the White channel on a job-by-job basis.

For automation purposes, it is best to create a 'White Toner Only' print condition preset:

- Open a processed job in ImageViewer
- Set each of the CMYK curves to 0, output curve from 0-100% (100 Input = 0 Output)
- Leave the White curve as an INPUT=OUTPUT diagonal curve (0=0 and 100=100)
- Save these changes as a 'White Toner Only' preset





To apply this White Toner Only preset to a print job for a 1st Pass print:

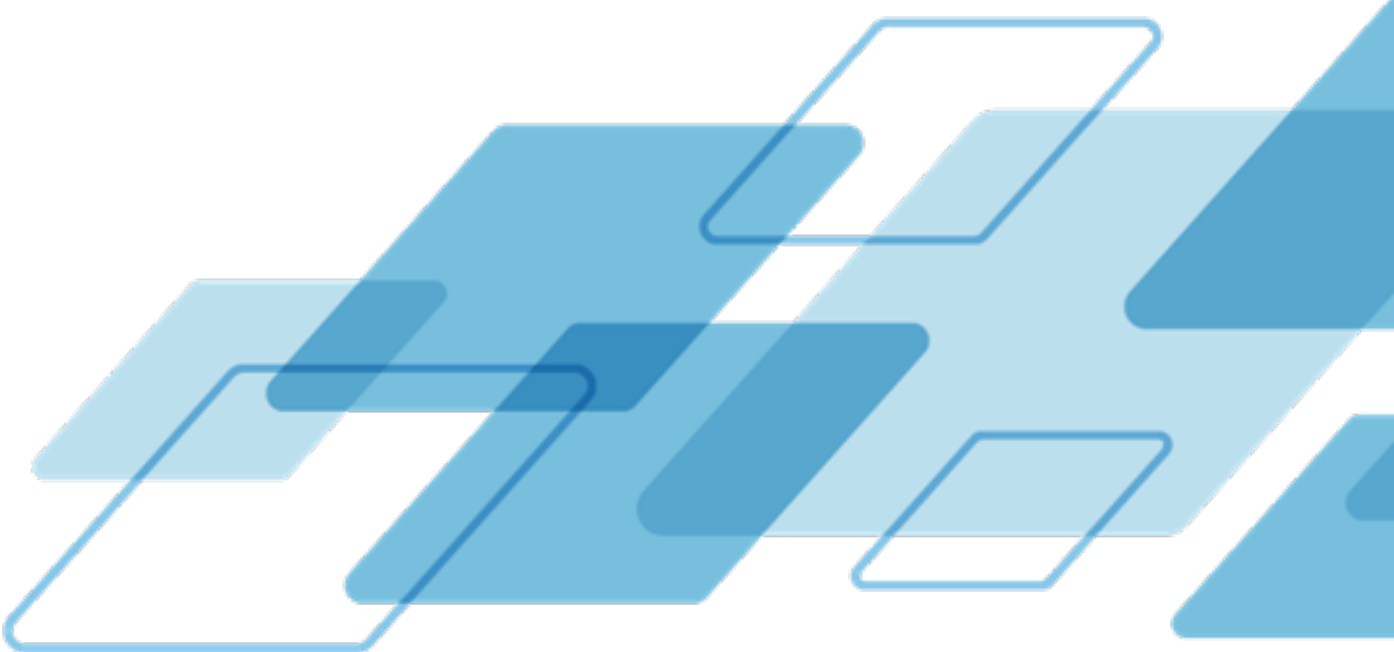
- Open Job Properties and go to <Color -> **Raster Curve Preset**>
- Select your '**White Curve Only**' preset

Create a Fiery Preset for 1st and 2nd pass printing

You can create a **Fiery Preset** that sets all the defaults for a 1st Pass White print condition. If you print the job with these settings, you will print White-only sheets. Then you reload the printed sheets back into the printer in the correct orientation and reprint the jobs using the '**No correction**' Raster curve preset.

Using the same process, you can create a Fiery Preset that uses the 'No correction' Raster curve preset as the 2nd Pass or as a single pass White + CMYK for media that does NOT require a 2nd Pass.

*Note: **Silver paper** does NOT benefit from a 2nd pass.*



For more information, please visit fiery.com.



Nothing herein should be construed as a warranty in addition to the express warranty statement provided with Fiery, LLC products and services.

ColorGuard, ColorRight, Command WorkStation, ColorWise, Fiery, the Fiery logo, Fiery Compose, Fiery Driven, the Fiery Driven logo, Fiery Edge, Fiery Essential, Fiery HyperRIP, Fiery Impose, Fiery Impress, Fiery ImageViewer, Fiery Intensify, Fiery JobExpert, Fiery JobFlow, Fiery JobMaster, Fiery Prep-it, Fiery Prints, the Fiery Prints logo, Fiery TrueBrand, FreeForm, MicroPress, IQ, PrintMe, RIPChips, RIP-While-Print, Spot-On, Spot Pro, and WebTools are trademarks or registered trademarks of Fiery, LLC and/or its wholly owned subsidiaries in the U.S. and/or certain other countries. All other terms and product names may be trademarks or registered trademarks of their respective owners and are hereby acknowledged.

© 2025 FIERY, LLC. ALL RIGHTS RESERVED.

FTL_062.07.25