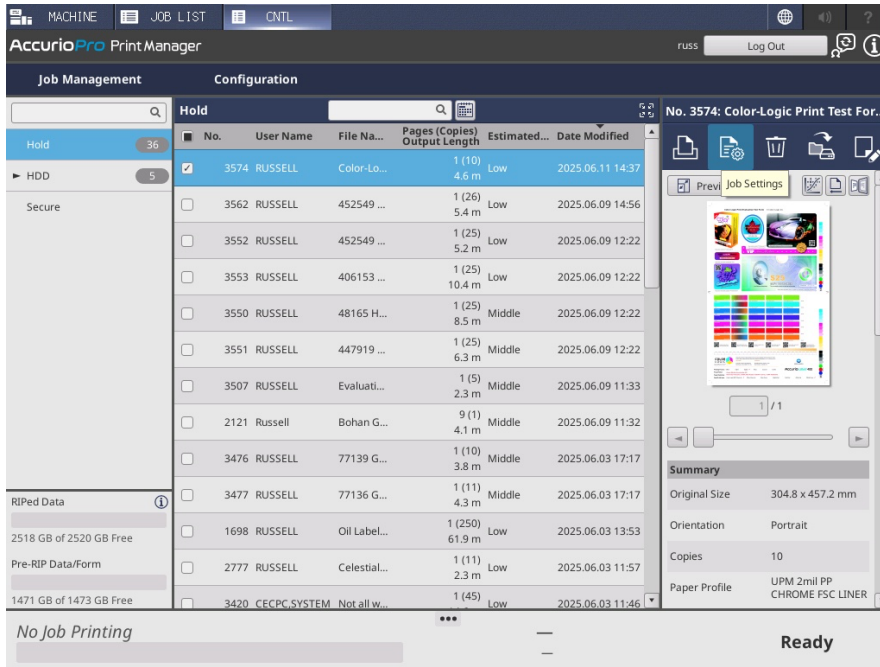
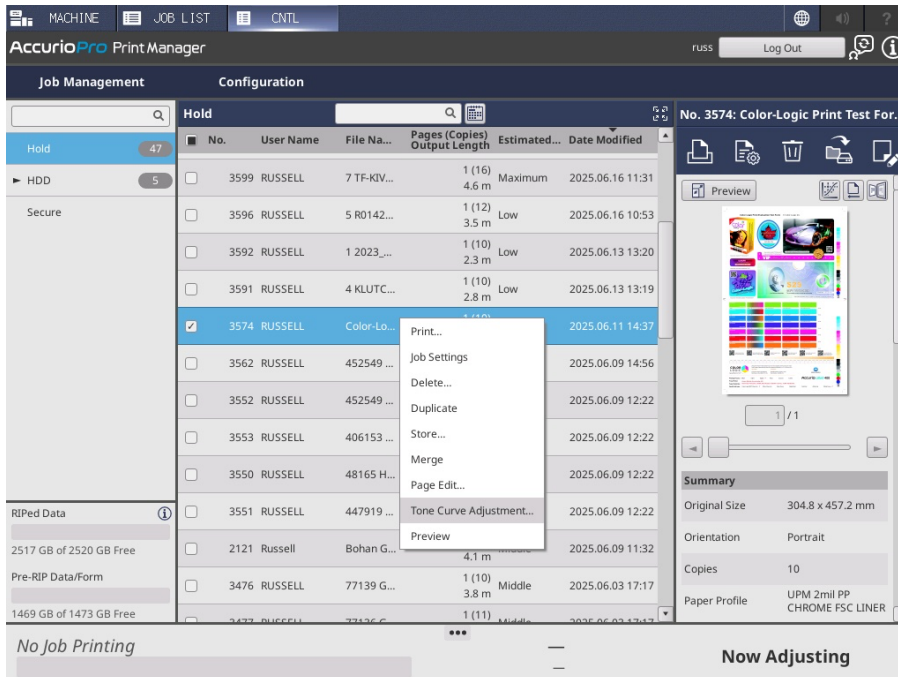


How to apply inverse setting for Color-Logic workflow

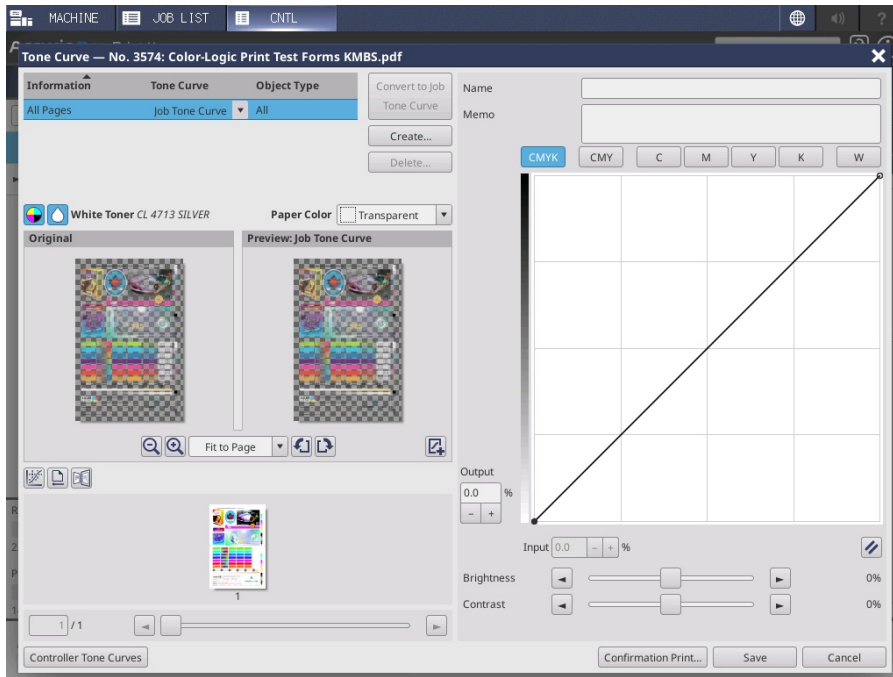
Step 1. Bring file into IC-611 controller (i.e drag and drop file into HOLD queue).



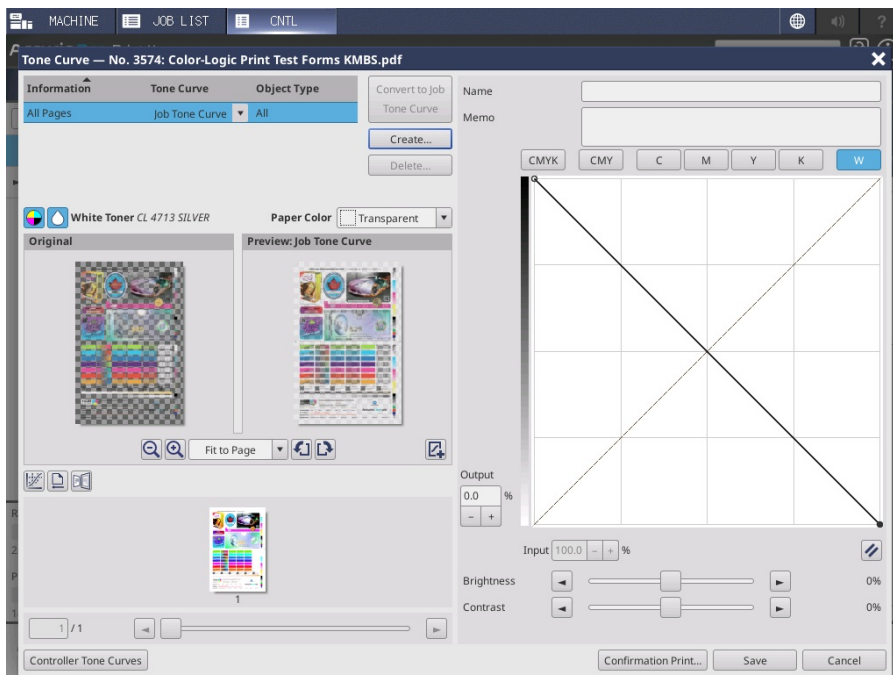
Step 2 . Right click on selected file and select Tone Curve Adjustment



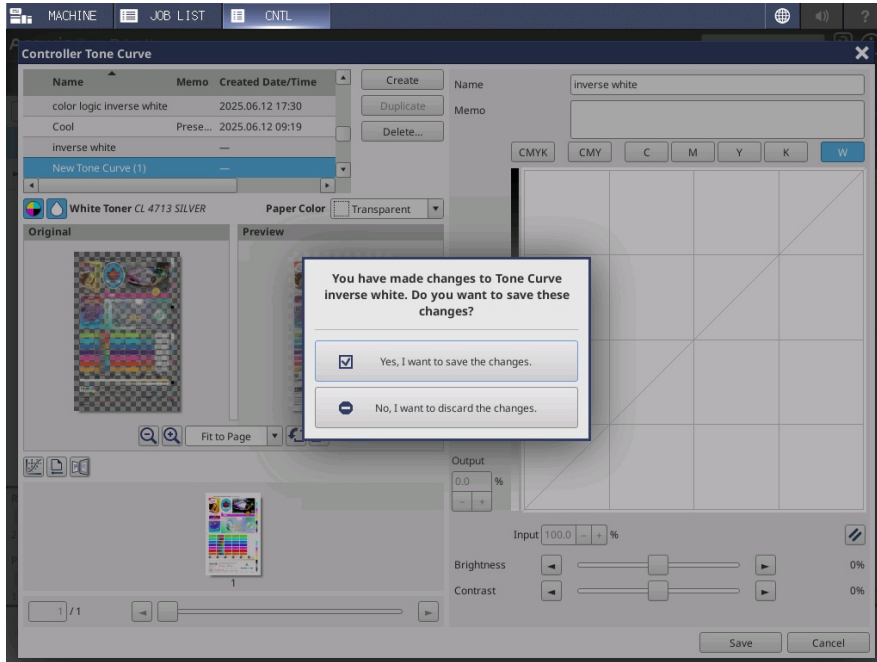
Step 3. Select the 'W' adjustment selection from top right area.



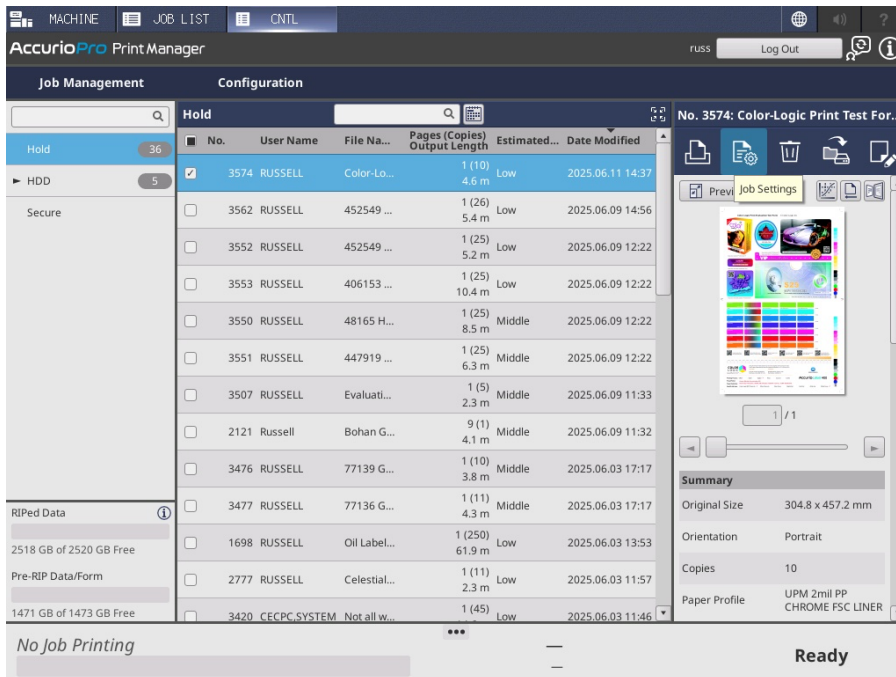
Step 4. Invert the tone curve by moving end points of tone curve to opposite corners (should look something like the below).



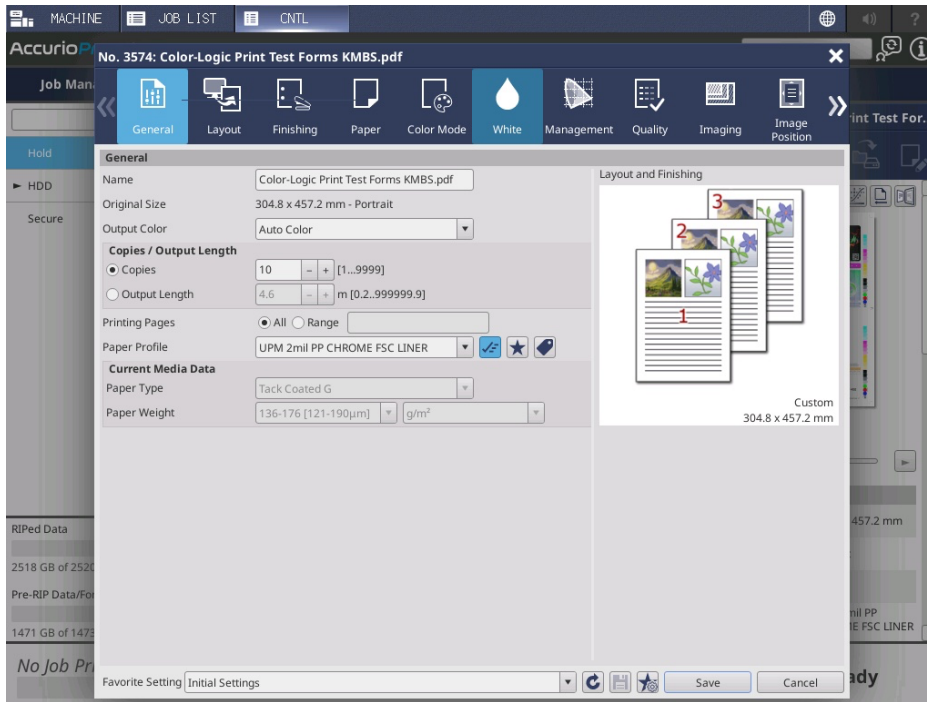
Step 5 Save the changes made.



Step 6: if some elements are missing it is likely the white plate is too opaque. To reduce the white density/gradation first highlight job and then select Job Settings...



Step 7: Under Job settings select the “white” tab



Step 8: Select Use White Gradation (lower left corner) and reduce white toner density. This is also the location where we can re-map and define the CL 4714 SILVER spot color to the white channel for the Accuriolabel 400.

