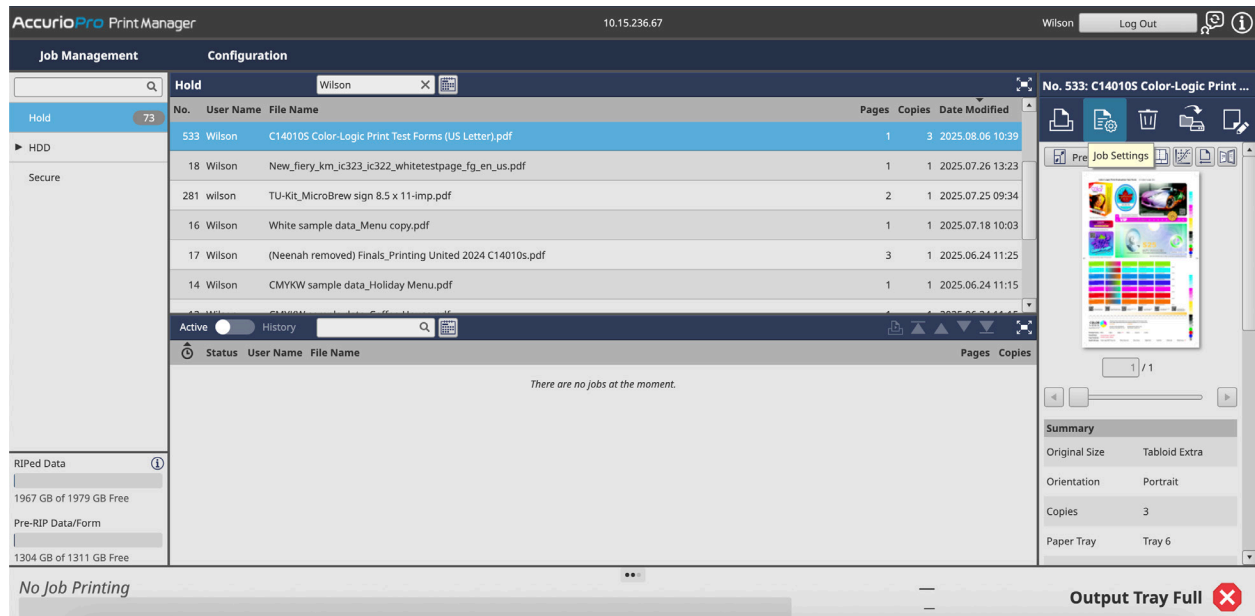
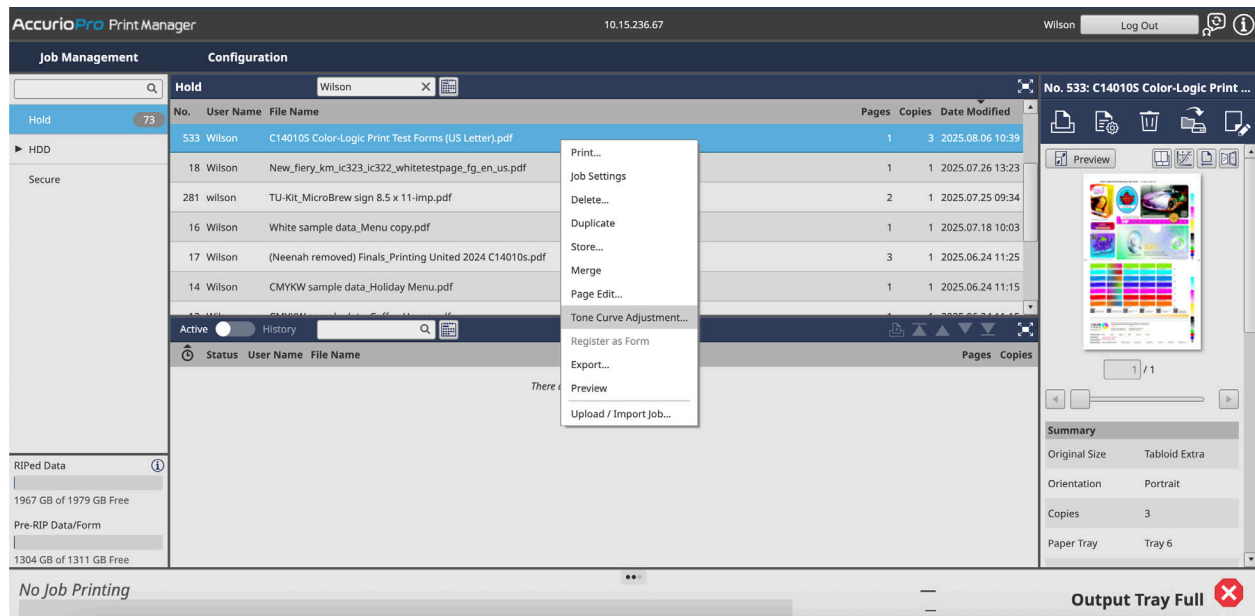


How to apply inverse setting for ColorLogic workflow

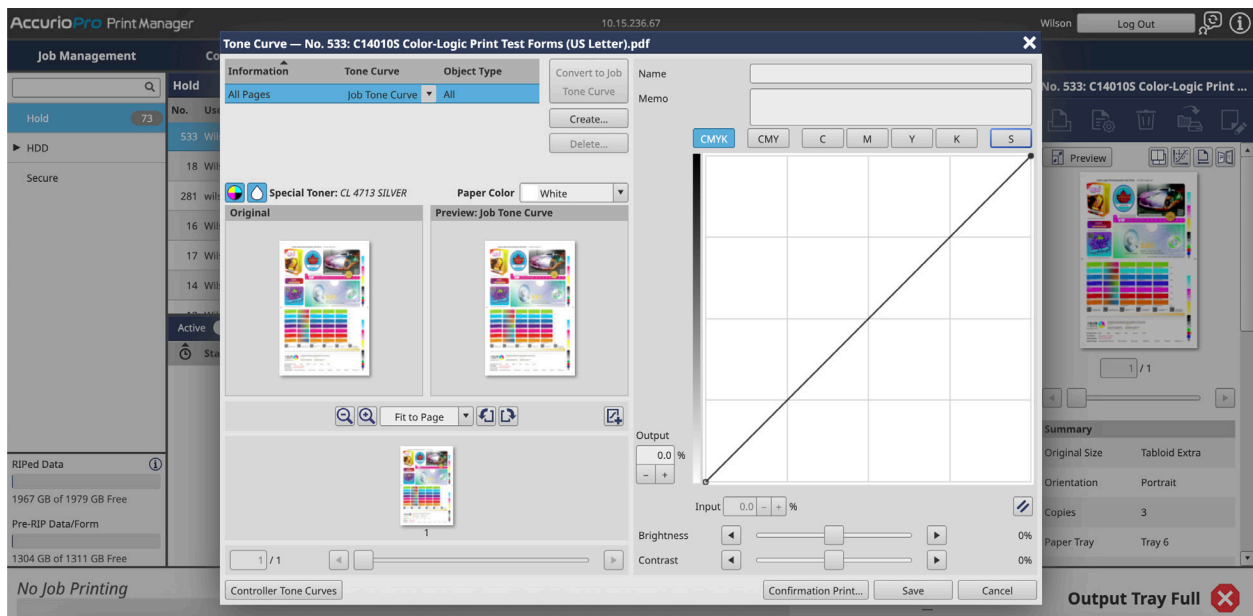
Step 1: Bring file into the IC-614 controller (i.e drag and drop file into HOLD queue).



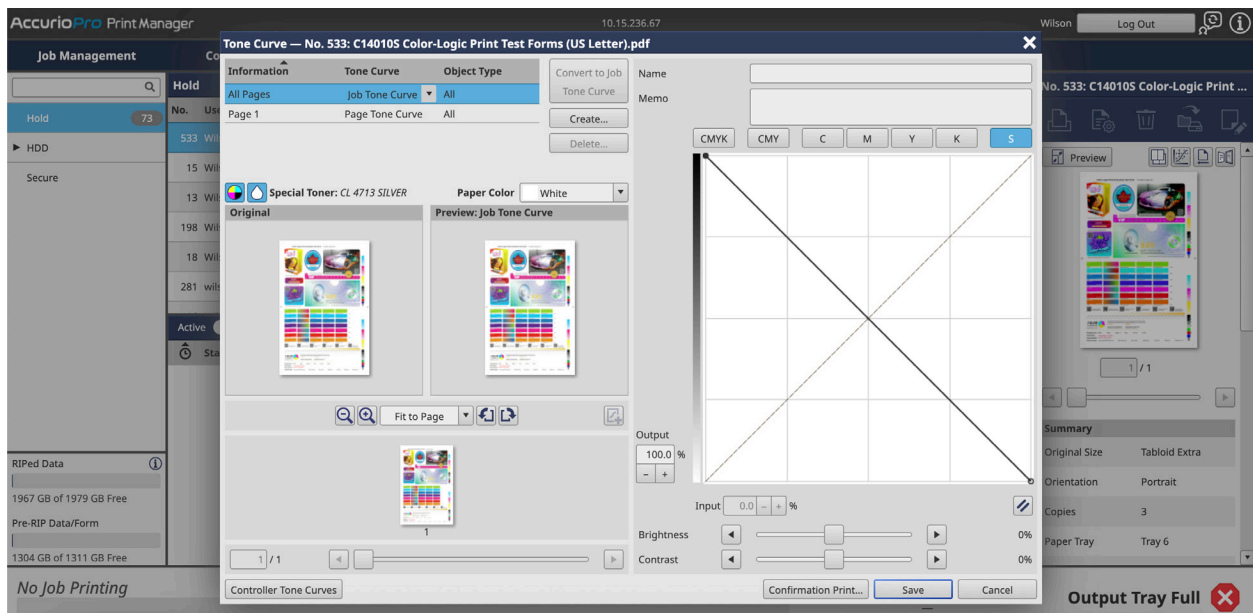
Step 2: Right click on selected file and select Tone Curve Adjustment



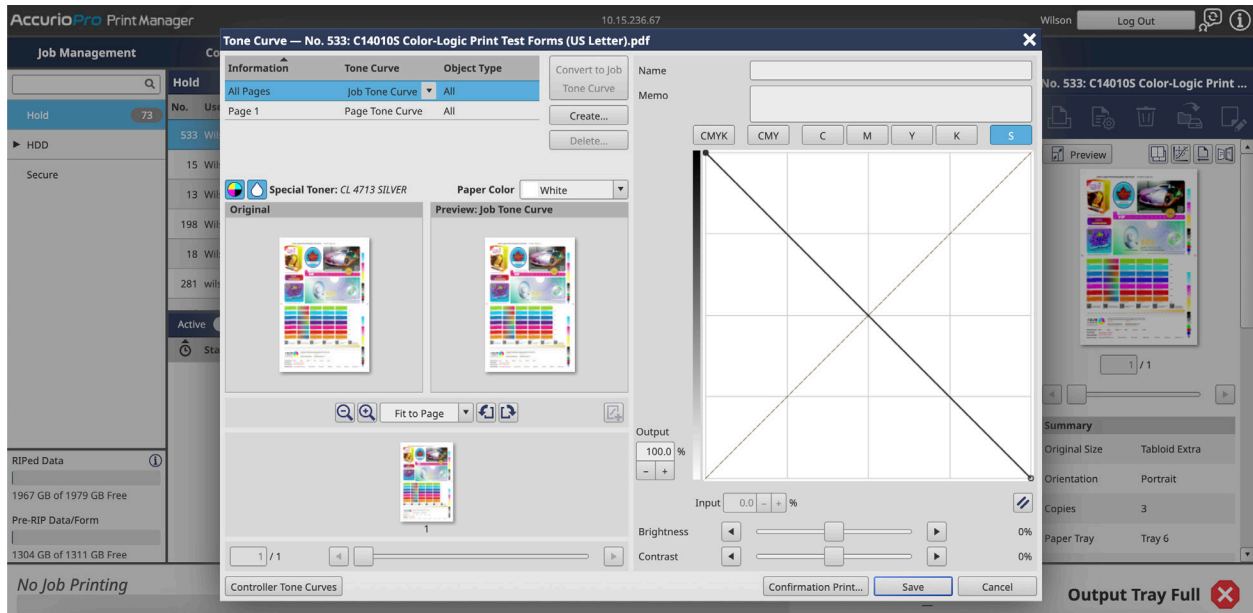
Step 3: Select the 'S' adjustment selection from top right area.



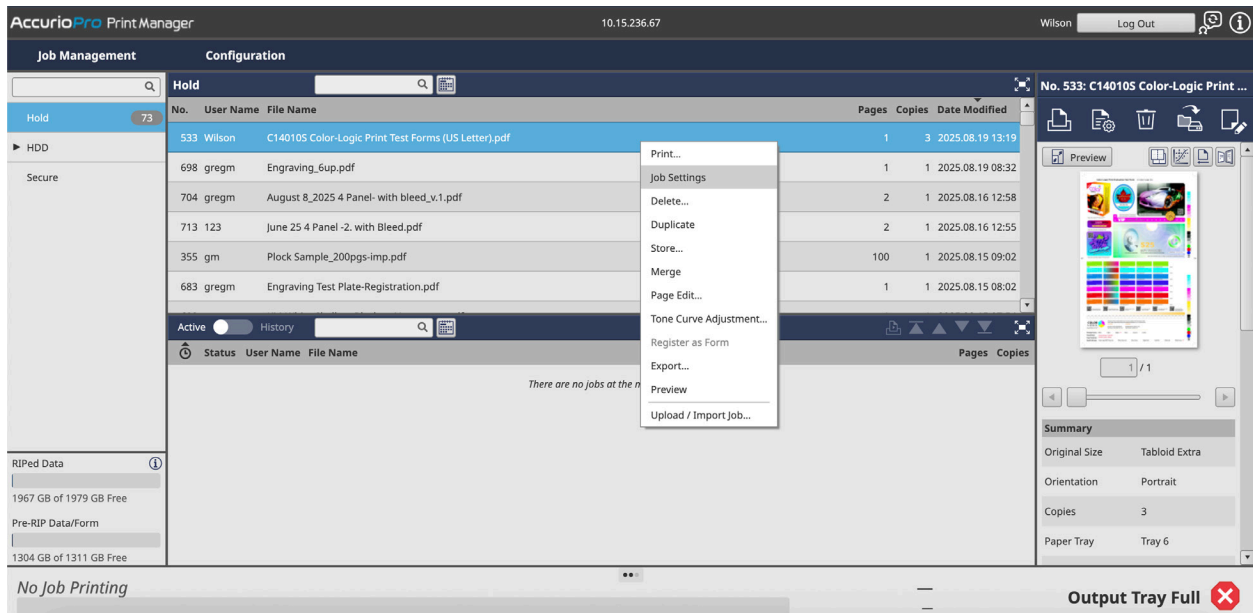
Step 4: Invert the tone curve by moving end points of tone curve to opposite corners (should resemble the below image).



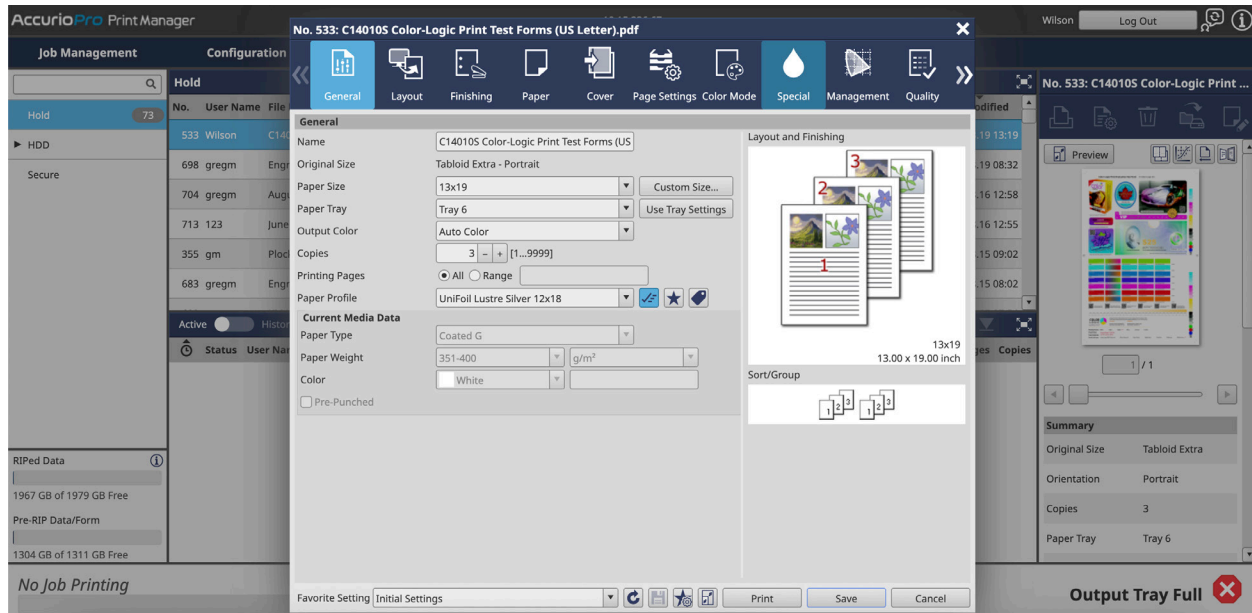
Step 5: Make sure to save changes at the bottom right.



Step 6: If some elements are missing, it is likely the white plate is too opaque. To reduce the white density/gradation, first highlight job and then select Job Settings...



Step 7: Under Job settings select the “Special” tab



Step 8: You can utilize “Special Toner Density” in order to reduce white toner density. This is also the location where we can re-map and define the CL 4714 SILVER spot color to the white channel Media Data for the AccurioPress C14010S and C12010S.

