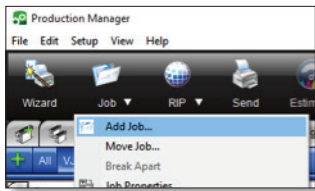


**NOTE:** These instructions work for Flexi (and PhotoPRINT) Production Manager Version 10x, 11.x and 12.x.

## For Color-Logic Metallic Ink Files:

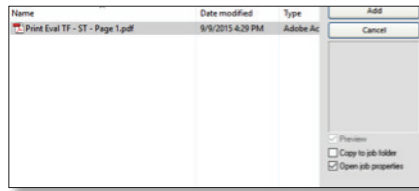
### Step 1

Open Flexi Production Manager, select a printer with a metallic ink print mode and click on the Job icon and select **Add Job**.



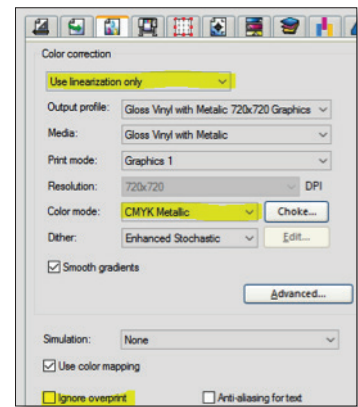
### Step 2

Browse to and select your process separated PDF file, check the box **“Open Job Properties”** and Click **Add**.



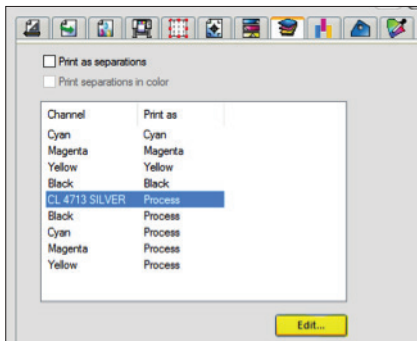
### Step 3

In Job Properties, click on the **Color Management tab** and select **Use Linearization Only**, then select a Color Mode that is **CMYK Metallic**. Make sure **Ignore Overprint** is unchecked.



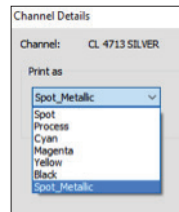
### Step 4

Click on the Separations tab, select the **CL 4713 SILVER** channel and click **Edit**.



### Step 5

Change the Print As to: **Spot\_Metallic**.



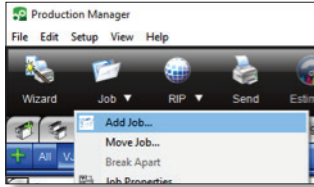
### Step 6

From here, the ink setup is done. Setup other jobs settings such as size, tiling etc., as needed and click **Send** to print.

# For Color-Logic White Ink Files:

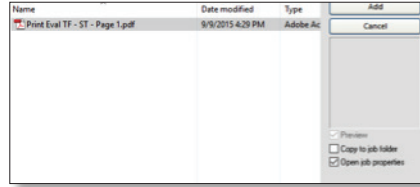
## Step 1

Open Flexi Production Manager, select a printer with a white ink print mode and click the Job icon and select **Add Job**.



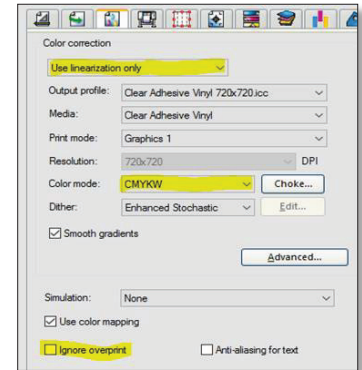
## Step 2

Browse to and select your process separated PDF file, check the box **“Open Job Properties”** and Click **Add**.



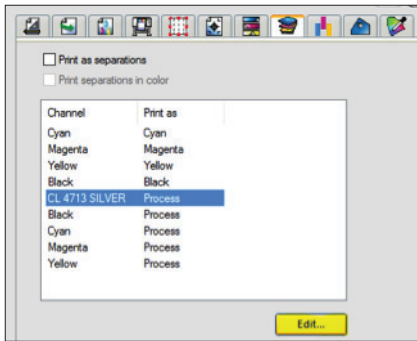
## Step 3

In Job Properties, click on the **Color Management** tab and select **Use Linearization Only**, then select a Color Mode that is **CMYK and WHITE**. Make sure Ignore Overprint is unchecked.



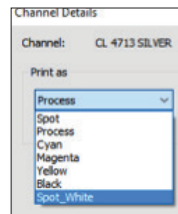
## Step 4

Click on the Separations tab, select the **CL 4713 SILVER** channel and click **Edit**.



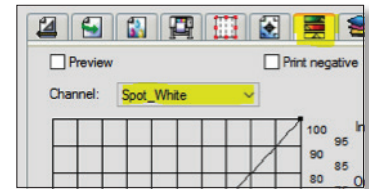
## Step 5

Change the Print As to: **Spot\_White**.



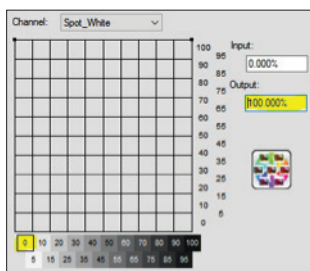
## Step 6

Next, you need to invert the channel. Do this by first clicking on the **Color Adjustments** Tab and in the Channel section, selecting **Spot\_White**



## Step 7

Under the channel curve display, click on the **0 box**, then enter **100** into the **output box**.



## Step 7

The **Spot\_White** channel should now appear inverted in the curve display. From here, the ink setup is done. Setup other jobs settings such as size, tiling etc., as needed and click **Send to print**.

