

## Using the Fiery® Single Pass Silver Application

**\*\*\* IMPORTANT \*\*\***

**THE SILVER TONER MUST BE AT THE FRONT OF THEPRESS (FIRST DOWN PRINTING!)**

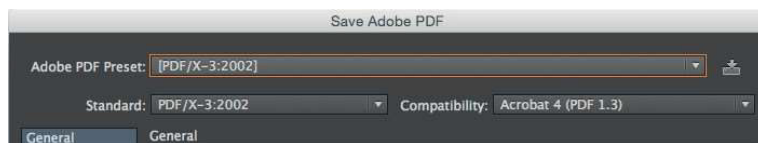
**IF YOU DO NOT KNOW HOW TO CHANGE THE POSITION OF THE SILVER TONER, CONTACT YOUR LOCAL RICOH REPRESENTATIVE**

## Printing with Metallic Toner

The purpose of this tutorial is to demonstrate how to print a PDF file in a I-Pass workflow with the Color-Logic “CL 4713 SILVER” Spot Color incorporated in the design, applying Silver Toner on a substrate using Fiery Command WorkStation and Fiery Single Pass Silver Application.

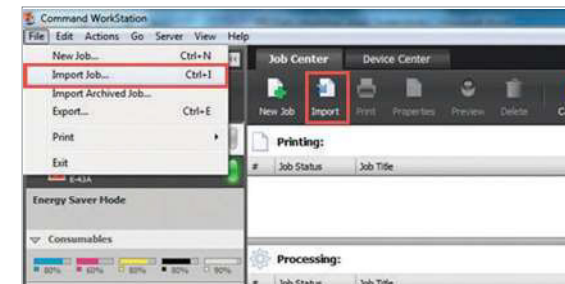
### Basics Design Steps

1. Open or create the Color-Logic design that will be printed with silver toner.
2. Export your PDF file as PDF/X-3 (PDF1.3 or newer).



### Printing

1. Open Fiery Command WorkStation and import the desired file by clicking on **File > Import Job** or by clicking on the Import button under the Job Center tab.



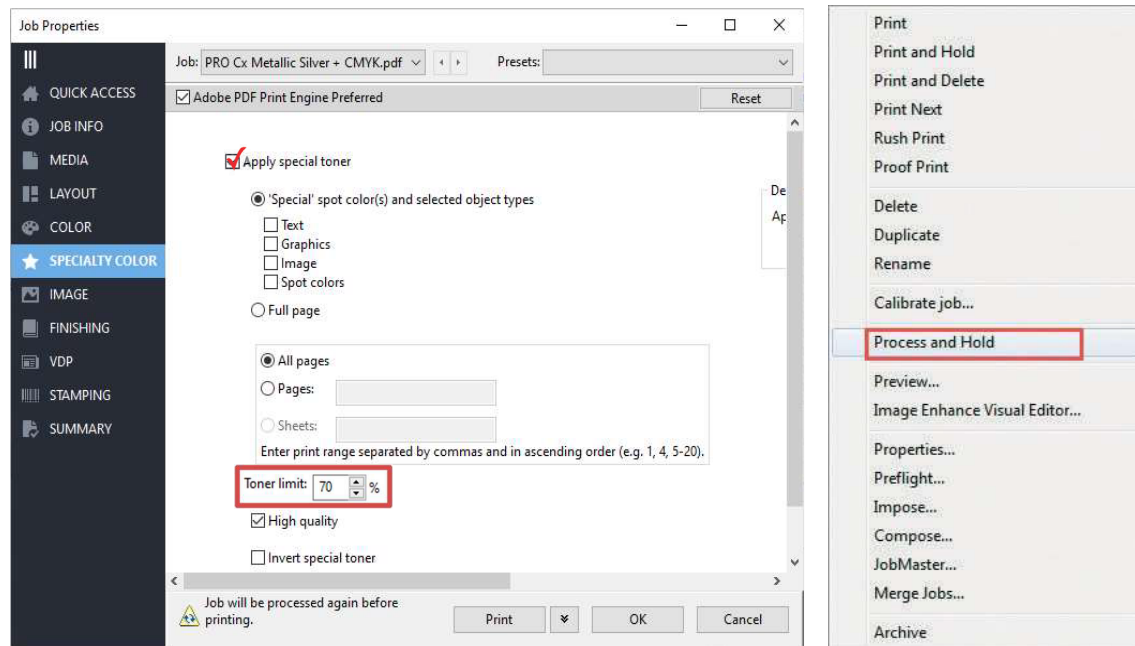
2. To import the file, click on **Add**, browse to the file location, then select **Hold**, which will send the file to the Held queue in Fiery Command WorkStation.



## Using the Fiery® Single Pass Silver Application

3. Select the file in the Held queue and open **Job Properties** by right-clicking and selecting Properties or by clicking on the Properties button under the **Job Center** tab. Once opened, go to the **Specialty Color** tab and make sure “**Apply Special Toner**” is selected and set “**Toner Limit to 70%**”.

Select any other print settings e.g. media type, media weight, number of copies and then **Click OK**. Select the job in the Held queue then right-click to **Process and Hold**.



### Recommendations

When printing with Silver Toner – for the best results (more reflective) set the Toner Limit to 70%

Before you print you need to add the Color-Logic spot colour “**CL 4713 SILVER**” to the specialty color group in Fiery Command WorkStation.

Go to Device Center, click on the **Resources** tab, and select **Specialty Colors**. Select the Silver specialty color group and click **New**. Type in the name of the spot color (CL 4713 SILVER) and **Click OK**.

