

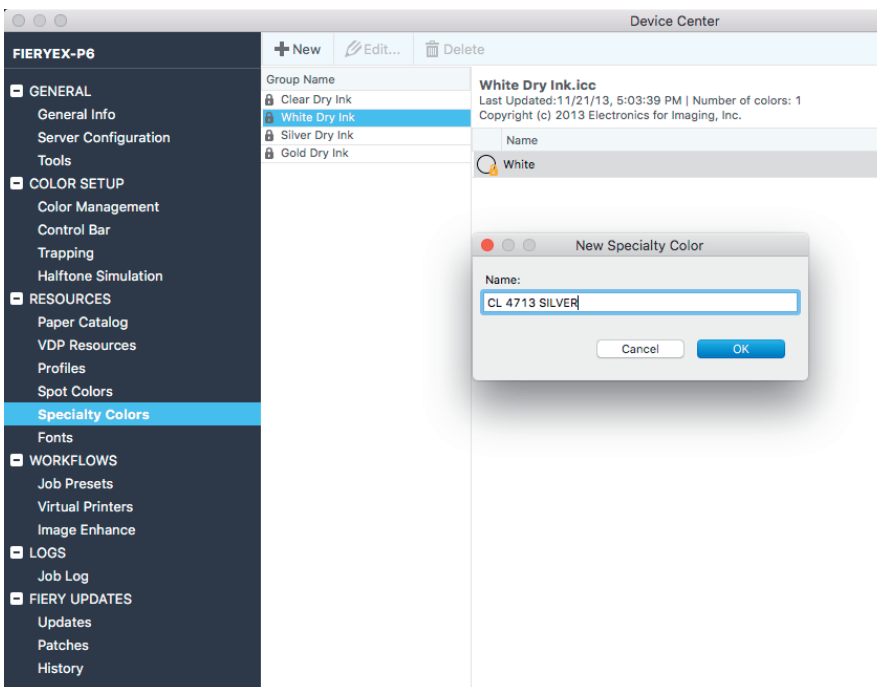
Printing on a Xerox® Iridesse® Production Press with Xerox EX-P 6 Print Server Powered by Fiery® using White Dry Ink

We recommend switching on APPE when processing Color-Logic files, to ensure correct overprint and transparency settings are honoured within your artwork.

On the Xerox Iridesse: make sure that **White Dry Ink** is installed in the **6th (under CMYK)** housing. Create a stock in the Stock Library and assign it to a tray. Make sure the stock is set as a **Metallic** stock.

Ensure that your **EX-P 6 Print Server** is **version 1.1** and that you're using **Command WorkStation version 6.2.0.243 or newer**.

Setting up the Color-Logic spot color in Fiery Command WorkStation



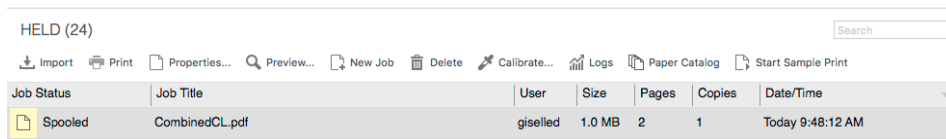
Go to **Device Center** --> **Resources** --> **Specialty Colors**

Select the **White Dry Ink** group name. Right click and select Add Color.

Enter "**CL 4713 SILVER**" without quotes. Click OK. **Exit** back to the Held queue.

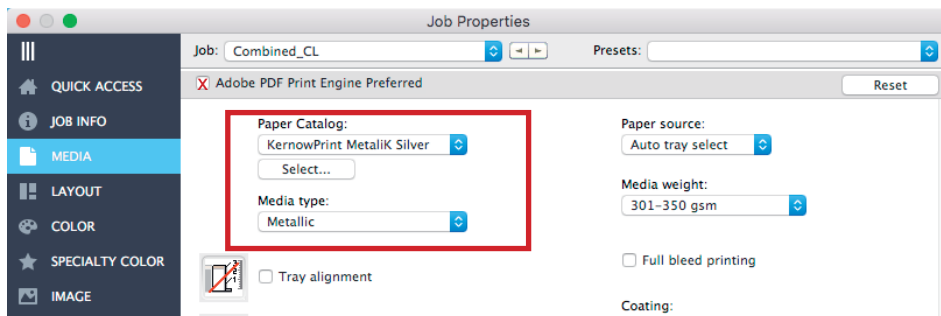
Setting up Job Properties

Drag the Color-Logic job into the Held queue, then double click on the job to open **Job Properties** (or right click and select Job Properties).

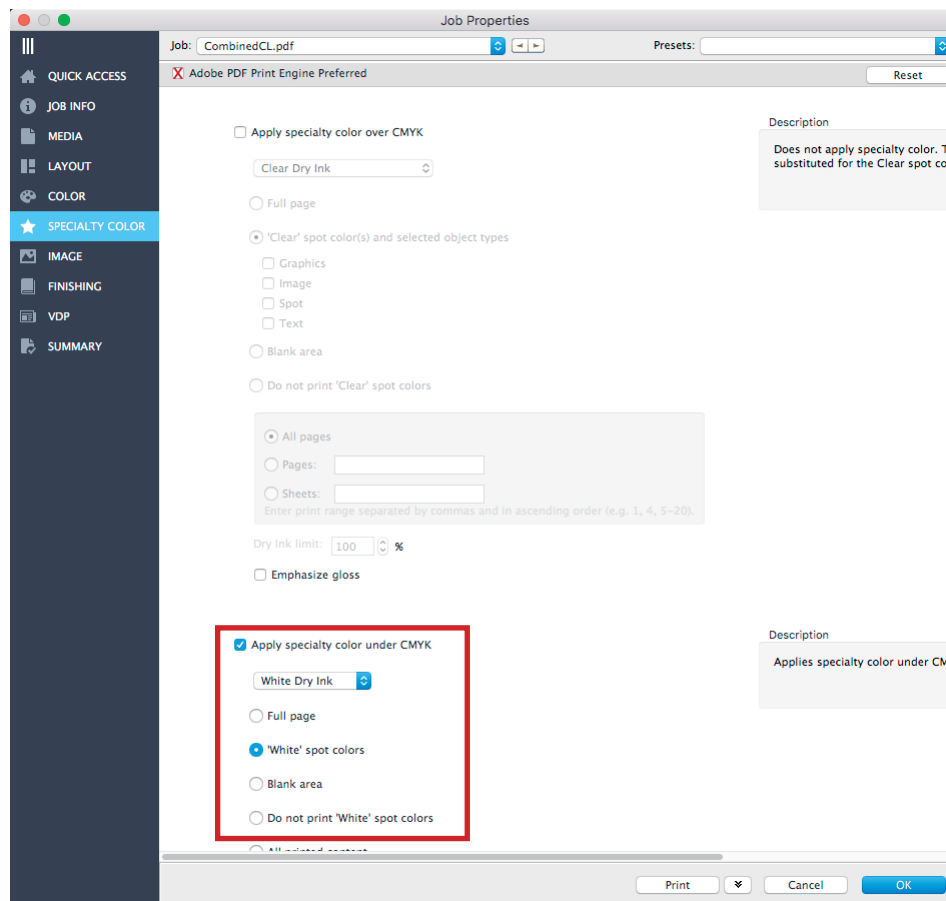


Job Status	Job Title	User	Size	Pages	Copies	Date/Time
Spooled	CombinedCL.pdf	giselled	1.0 MB	2	1	Today 9:48:12 AM

In the **Media** tab, select your **Paper Catalog** entry. Make sure the Media type shows as **Metallic**. If it does not, edit your Stock Library entry accordingly.

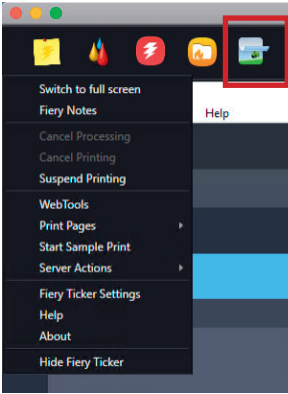


In the **Specialty Color** tab, choose **White Dry Ink** to apply under **CMYK**. Make sure **'White' Spot Colors** is selected.



Select any other relevant job information (such as duplex), then click OK to exit to the Held queue.

On the NX Station monitor, hover the mouse over the top left corner of the Fiery Ticker bar. Select the **Multi-Pass** icon.



Select your job from the drop-down list. Check **Invert specialty color under CMYK**. Ensure the **Color Separations** look like the below screenshot, then click **Print**.

